



MOTOR BASES

Description

The fastest and most economical method of securing motors to machine beds. The five sizes are manufactured from galvanised steel and they can accommodate motor frame sizes 63 to 180. They have four slotted holes for fastening the base to the foundation.

Motor base range from SL210 to SL490.

Specification

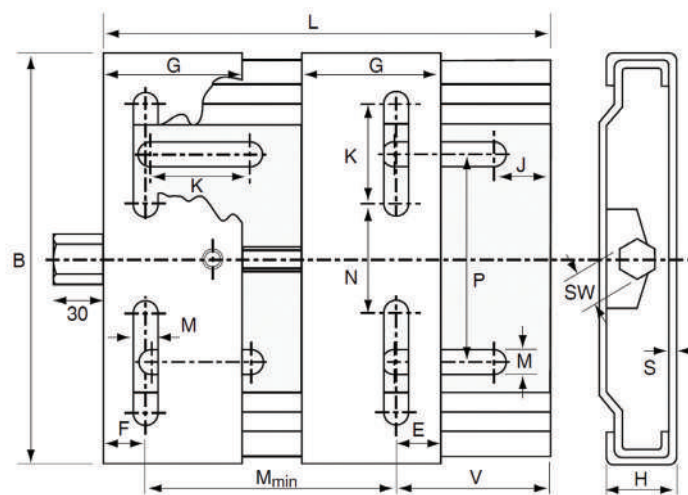
The fastest and most economical method of securing motors to machine beds. The five sizes are manufactured from galvanised steel and they can accommodate motor frame sizes 63 to 180. They have four slotted holes for fastening the base to the foundation.

Alignment

The pressed top plate is designed to slide over the base plate preventing vibration and noise whilst ensuring continuous belt alignment. Belts are tensioned by adjusting a single screw.

Motor Mount

The motor is bolted to the two piece top plate which accommodates a wide range of motors. Centre distance adjustments can be made without the need to loosen the motor bolts.



MOTOR BASES

Part No.	Frame Size	L	B	H	M	G	E	J	K	M	N	P	SW	S	V
SL210	63 - 80	210	195	33	100	70	20	25	50.0	10.5	43	98	19	3	90
SL270	63 - 100	270	195	33	100	70	20	25	50.0	10.5	43	98	19	3	150
SL307	90 - 112	307	213	35	100	70	20	30	50.0	10.5	65	108	19	3	175
SL340	90 - 132	340	290	39	136	95	27	29	62.5	12.5	90	165	22	4	180
SL430	90 - 160	430	290	39	136	95	27	29	62.5	12.5	90	165	22	4	271
SL490	160 - 180	490	409	40	110	95	40	30	60.0	15.0	193	142	22	4	336